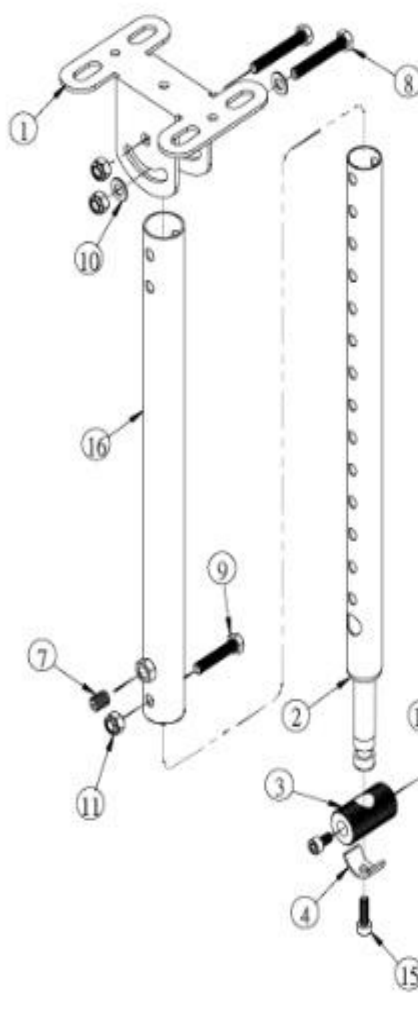


Ceiling Mount Bracket



Key Specifications/SpecialFeatures:

- ◆ For VESA mounting 50 x 50.75 x 75 and 100 x 100.100 x 200mm(Optional)
- ◆ Adjustable tilt: 90-degree up and 90-degree down
- ◆ Swivels left and right at 360-degree
- ◆ Maximum load capacity: 22.7kg or 50lbs
- ◆ Support up to a 32-inch LCD
- ◆ Swivel angle: 360-degree
- ◆ Material weight: 1.85kg
- ◆ Pole diameter: 1.6cm, 2.6cm, 3cm
- ◆ Adjustable height range: 58.5 , 61, 63.5, 66 , 68.5, 71 , 73.5 , 76 , 78.5 , 81 , 83.5 , 86 cm

Item	Spare parts	Q'ty
1	WALL BRACKET	1
2	ADJUSTANGLE TUBE	1
3	SCREW FOR ADJUSTANGLE	1
4	FIXED PLATE	1
5	PLATFORM BASE	1
6	EXTENSION FIXED PLATE	2 (Option)
7	SCREW 3/8"-16UNC*L1/2"	1
8	SCREW BH 5/16"-18UNC*L2"	2
9	SCREW BH 5/16"-18UNC*L1 1/2"	1
10	WASHER ϕ 8* ϕ 16	2
11	NYLON NUT ϕ 5/16"	3
12	SCREW M4*P0.7*L12mm	8
13	NYLON NUT M4	8
14	SCREW M6*P1.0*L12mm	3
15	SCREW M6*P1.0*L20mm	1
16	EXTENSION TUBE	1
17	ALLEN WRENCH NO.5	1
18-1	SCREW M5*P0.8*L15mm FOR LCD	4
18-2	SCREW M6*P1.0*L15mm FOR LCD	4
19	SCREW M4*P0.7*L12mm FOR LCD	4
20-1	SPRING WASHER ϕ 5	4
20-2	SPRING WASHER ϕ 6	4
21	SCREW 1/4"*L2"	4
22	PLASTIC WALL ANCHORS ϕ 10	4
23	WASHER ϕ 6* ϕ 18	4

