

Easy Check Programmer Device

Easy Check

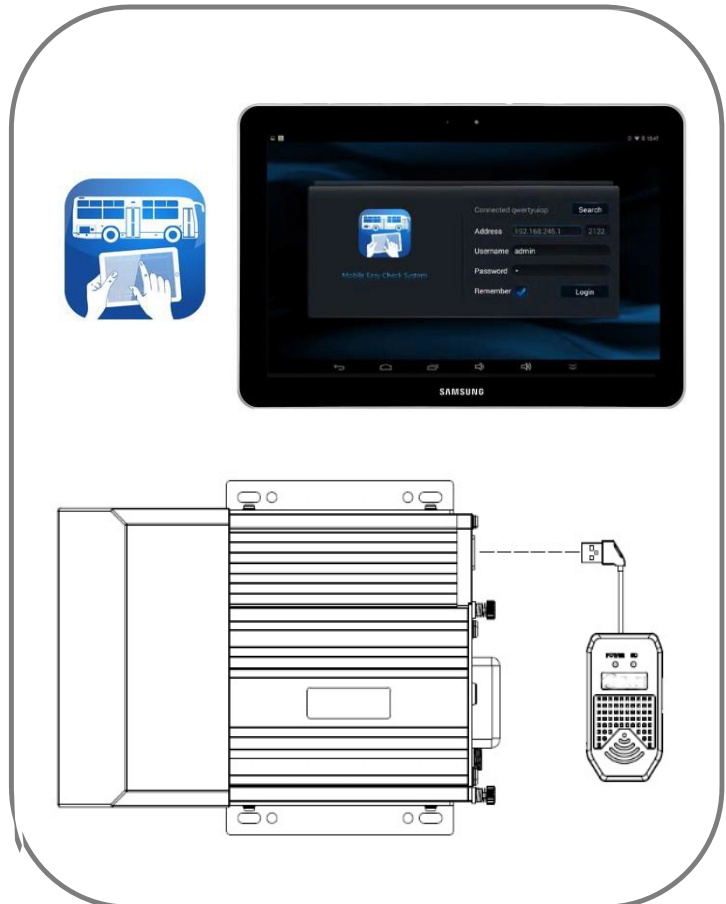


Key Features

- Convenient to use the device in limited space, extension cord USB design;
- Plug and play, and it will connect automatically via WIFI;
- Support external SD card file backup.
- Software Features
- Search and find the MDVR via WIFI network
- Check the status information of device
- Supports multi-channel HD video real-time preview
- Supports main and sub streams switch automatically when switching images;
- Supports video/track, speed curve playback analysis;
- Supports video backup and unlock the locked video;
- Supports the export of device alarm log, user operation log and parameter file;
- Supports single firmware update.

Product		USB-EC
Function Overview		Preview, Playback, Search, Setting
System	Operation System	
	Control Mode	WIFI
Interface	USB	USB 2.0x1
	SD	SDx1
Network	WIFI	Support(802.11b/g/n)
Power	Voltage	DC 5V
	Current	500mA@5V
Physical Characteristics	Dimension(L x W x H)	49.9x90x18 mm
Environment	Working Temperature	-10°C ~ +50°C
	Working Humidity	20% -80% (Non-condensing)

Application VIEW



Dimensions

